

## ApeosPrint 5330

A4 Monochrome Printer  
Catering to your everyday business needs

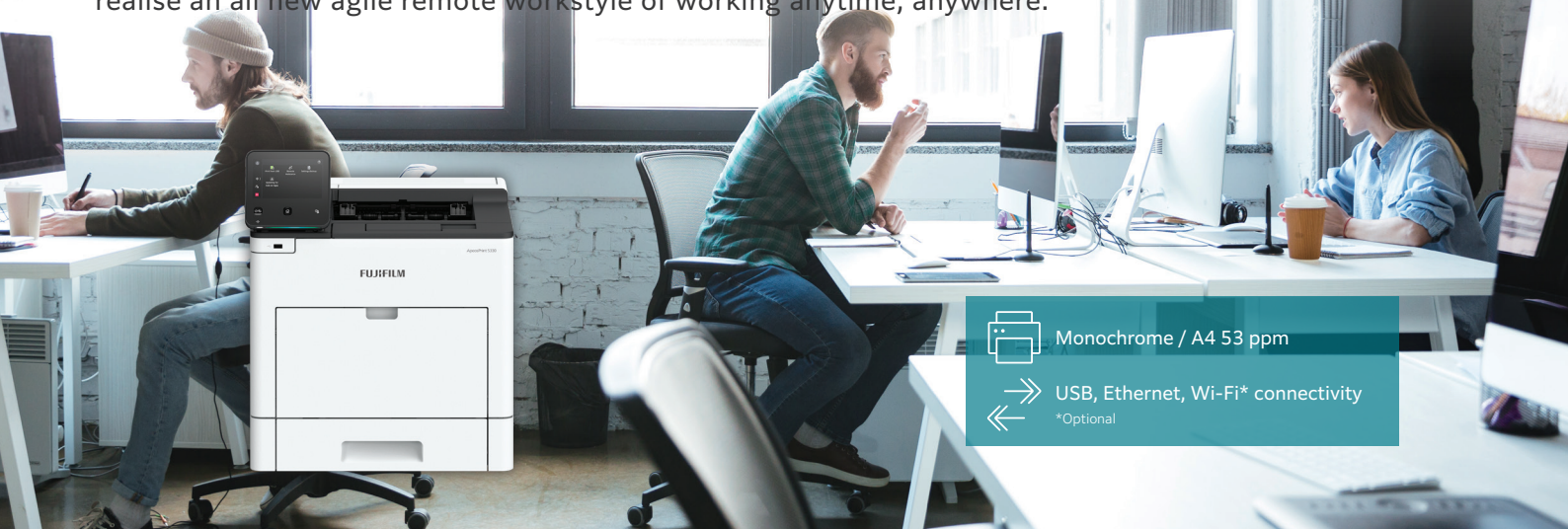




# New Times, New Apeos

The new “Apeos” offers advanced features with high security level and easy operability to help business diversify with times.

“Apeos” devices are able to connect smoothly with a variety of solutions and services to realise an all new agile remote workstyle of working anytime, anywhere.



## Superb printing quality

- Print resolution up to 1,200 x 1,200 dpi
- Super EA-Eco toner for fine text and fine lines

## Fast printing speed

- Print up to 53 ppm on A4 size
- Automatic 2-sided printing
- High reliability with robust design.

## ECO support

- Toner save function in increments of 1%
- Super EA-Eco toner: Fusing achieved at a low temperature contributes to low power consumption

## Flexible. Secure. Reliable

Offices can easily use different FUJIFILM devices thanks to shared functions across the lineup.

### Supporting Universal Print by Microsoft\*<sup>1</sup>

By registering ApeosPrint 5330 to Universal Print by Microsoft in advance, users\*<sup>2</sup> authenticated with Azure AD can print from anywhere through cloud.

\*1: Optional Storage (SSD) is required.

\*2: Organizations with Microsoft Windows Enterprise or Microsoft 365 subscriptions

### Print out from any printer within the office

With Server-less On-Demand Print\*, you have the flexibility to print and collect the print outs from any of the connected printer.

- Improves productivity by printing from another available device when the current device is in use
- Up to 100 devices can be linked

\* Optional

### Safeguard important information

- Prevents paper information leakage with Secure Print and Private Charge Print with IC card authentication\*. With Image Log\*, job logs and the image itself can be stored and managed, enabling prompt investigation upon information leakage.
- Newly support WPA3 as latest wireless LAN security protocol and adopt TPM (Trusted Platform Module) 2.0, as a security chip that conforms to the latest standards with enhanced encryption
- Detects tampering of device software and self-repairing feature protects and repairs device software against tampering events
- Provides more robust and secured office environment with enhanced security feature of both hardware and software

\* Optional

### Reliable support system

From consumables replacement to unexpected device failures, most problems can be resolved without waiting for the service or sales representatives.

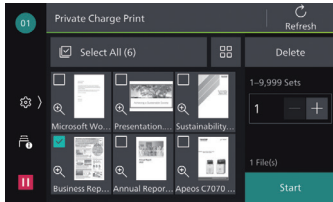
- Resolve problem using the “Help” function on the device
- “Remote Assistance” with the help of operators



# ApeosPrint 5330, catering to your everyday business printing needs

## User-friendly colour touch panel

- Home screen personalisation for ease of access to commonly used functions
- When using Private Charge Print, you can easily select and delete the documents viewing the thumbnails\* shown on the panel.



\* Optional Storage (SSD) is required for thumbnail view.

## Smart & scalable

ApeosPrint 5330 can be installed just the way you like. As a desktop device, under a counter, or a console central printer.



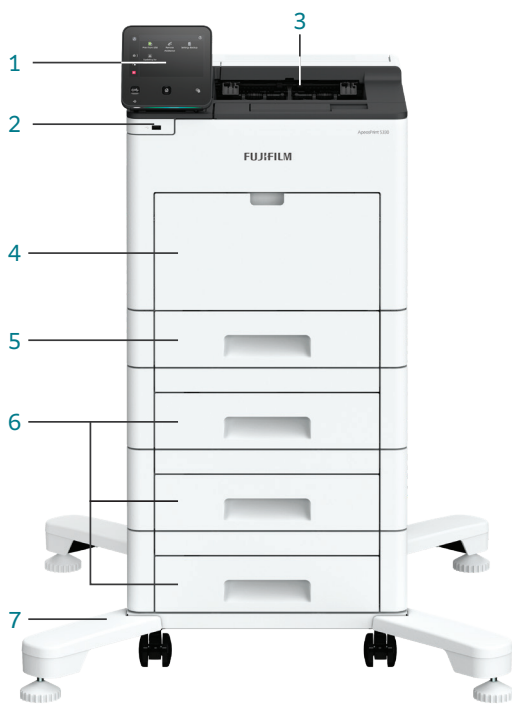
## Quick printing from your mobile device and USB flash drive

- You can print photos and documents (DocuWorks/PDF) stored in your iOS or Android mobile device.
- Connect to Machine via Wireless Environment or Wi-Fi Direct Connection\*
- You can easily print from mobile devices using Print Utility, AirPrint, and Mopria® Print Service.
- You can directly print the documents stored on a USB flash drive for efficient operations\*.



Print from mobile devices

\* Optional



- 1. 5-inch colour touch panel:**  
Intuitive colour touch panel lets you find just what you want at a glance
- 2. USB port\*:**  
Use your own USB flash drive to print directly
- 3. Output tray:**  
Capacity is 250 sheets
- 4. Bypass Tray (150 sheets):**  
Supports various paper types such as envelopes and postcards
- 5. Standard Tray (550 sheets):**  
For standard users. Supports various types & sizes of paper
- 6. 550-Sheet Feeder\* (550 sheets):**  
Paper feeding capacity is 2,350 sheets at maximum. High scalability for high-volume printing needs
- 7. Caster\*:**  
For easy installation and moving on the floor
- 8. Cabinet\*:**  
Convenient for storing paper and consumables
- 9. IC Card Reader\*:**  
You can use Private Charge Print with your IC card

\* Optional



## Printing envelopes, thick paper and long paper with a smooth surface

- Automatic adjustment of pressure to print envelopes
- A smooth paper feed path so that thick paper can run stably.
- Supports long paper up to 215.9 x 520 mm\*

\* Long Papers are fed from Bypass Tray.



# ApeosPrint 5330 Functions & Specifications

Items	Description	
Printing Method	LED Electrophotography	
Warm-up Time	38 seconds or less (23 degrees Celsius room temperature). 20 seconds or less from Sleep Mode.	
Continuous Print Speed*1	Simplex	53 ppm
	Duplex	34.3 ppm
First Print Output Time*2	3.8 seconds (A4)	
Printing Resolution	Standard	[PCL Driver] Standard: 1,200 x 1,200 dpi, High Resolution: 1,200 x 1,200 dpi, High Quality: 1,200 x 1,200 dpi
	Optional	[Adobe® PostScript® 3™ Driver] Standard: 1,200 x 1,200 dpi, High Resolution: 1,200 x 1,200 dpi, High Quality: 1,200 x 1,200 dpi
Paper Size	Standard Tray	A6*3, JIS B6*3, A5, JIS B5, ISO B5, A4, Statement (139.7 x 215.9 mm), Executive (184 x 267 mm), Letter, 8.5 x 13" (215.9 x 330.2 mm), Legal, Custom Size (Width: 76.2 to 215.9 mm, Length*4: 190.5 to 355.6 mm)
	Bypass Tray	A6, JIS B6, A5, JIS B5, ISO B5, A4, Statement (139.7 x 215.9 mm), Executive (184 x 267 mm), Letter, 8.5 x 13" (215.9 x 330.2 mm), Legal, COM-10, Monarch, DL, C5, Custom Size (Width: 64 to 215.9 mm, Length: 127 to 520 mm)
	Optional Tray	550-Sheet Feeder: A5, JIS B5, ISO B5, A4, Statement (139.7 x 215.9 mm), Executive (184 x 267 mm), Letter, 8.5 x 13" (215.9 x 330.2 mm), Legal, Custom Size (Width: 76.2 to 215.9 mm, Length: 190.5 to 355.6 mm)
2 Sided Printing	A4, JIS B5, A5, Letter, 8.5 x 13" (215.9 x 330.2 mm), Legal, Executive (184 x 267 mm), Custom Size (Width: 139.7 to 215.9 mm, Length: 203.2 to 355.6 mm)	
	Standard Tray	60 to 220 gsm
Paper Weight*5	Bypass Tray	60 to 220 gsm
	Optional Tray	550-Sheet Feeder: 60 to 220 gsm
	2 Sided Printing	60 to 176 gsm
Paper Tray Capacity*6	Standard	Standard Tray: 550 sheets, Bypass Tray: 150 sheets
	Optional	550-Sheet Feeder: 550 sheets
	Max	2,350 sheets [Standard + 550-Sheet Feeder x 3]
Output Tray Capacity*6	250 sheets	
CPU	ARM Dual Core 1.3 GHz	
Memory Capacity	2 GB (Max: 2 GB)	
Storage Device Capacity*7	3.6 GB, Optional: 82 GB**	
Page Description Language	Standard	PCL5 / PCL6
	Optional	Adobe® PostScript® 3™
Supported Operating System*9	Standard	[PCL Driver] Windows 11 (64 bit), Windows 10 (32 bit / 64 bit), Windows Server 2022 (64bit), Windows Server 2019 (64 bit), Windows Server 2016 (64 bit), Windows Server 2012 R2 (64 bit), Windows Server 2012 (64 bit) [Mac OS X Driver] macOS 12 / 11 / 10.15 / 10.14
	Optional	[Adobe® PostScript® 3™ Driver] Windows 11 (64 bit), Windows 10 (32 bit / 64 bit), Windows Server 2022 (64bit), Windows Server 2019 (64 bit), Windows Server 2016 (64 bit), Windows Server 2012 R2 (64 bit), Windows Server 2012 (64 bit) macOS 12 / 11 / 10.15 / 10.14
Interface	Standard	Ethernet 1000BASE-T / 100BASE-TX / 10BASE-T, USB3.0
	Optional	Wireless LAN (IEEE 802.11a / b / g / n / ac)
Network Protocol	TCP/IP (Ipd, IPP, Port9100)	
Power Supply*10	AC220-240 V +/- 10%, 8 A, 50/60 Hz common	
Operating Noise*11*12	In Operation	7.2 B, 56.4 dB (A)
	Ready Mode	4.2 B, 26.0 dB (A)
Maximum Power Consumption	Max	1,200 W (AC220 V +/- 10%), 1,380 W (AC240 V +/- 10%)
	Average	Ready Mode: 62 W (AC230 V) In Operation: 707 W (AC230 V) Sleep Mode: 0.4 W (AC230 V)
Dimensions	W 427.4 x D 465.5 x H 407.5 mm	
Weight	21.6 kg (Including consumables and drum)	
	20.0 kg (Excluding consumables and drum)	

- Note: Custom Paper Size setting may be required depending on the paper size.
- \*1: When Continuously Printing Original in A4 (Plain). The performance may be reduced depending on the paper type and the paper size. The speed may be reduced due to the image quality adjustment.
- \*2: When feeding from feeder tray of machine. Numeric value varies depending on output environment.
- \*3: When using A6 / JIS B6 paper with the Standard Tray, the optional A5 LEF / A6 Tray Guide is required.
- \*4: When the optional A5 LEF / A6 Tray Guide is attached, the length is 148 to 190.5 mm.
- \*5: It is recommended to use our recommended paper. Correct print output may not be possible depending on the requirement.
- \*6: 80 gsm paper.
- \*7: The Storage Device Capacity is not totally available for customers.
- \*8: When the optional Storage (SSD) is installed.
- \*9: Please refer to our official website for the latest supported OS.
- \*10: Power outlets that provide the above power level is recommended. Maximum machine measured current: 8 A.
- \*11: Measured in accordance to ISO7779. Unit B: Sound Power Level LWAd. Unit dB: Radiated Sound Pressure Level LpAm (bystander position), as reference value.
- \*12: Main unit only.

## Options

Product Name	Product Code	Product Name	Product Code
550-Sheet Feeder	EC104521	Multi-Language Font Kit	EC104208
Caster	EC104525	USB Memory Kit	EL300977
Cabinet	EC104526	Security Expansion Kit	EL300981
A5 LEF / A6 Tray Guide	EC104520	Data Overwrite Kit	EC104531
Wireless Network Kit 2	EC104218	TC/SC Additional Font ROM Kit	EL300983
Storage (SSD)	EL300984	Embedded IC Card Reader B	EC104697
External Access Kit	EL300979	Software / Product Manual	EL300972
Adobe® PostScript® 3™ Kit	EL300974		
Adobe® PostScript® 3™ Kit label	ED201136		

## Consumables

Product Name	Product Code	Product Life
Drum Cartridge Black (Starter)	—	Up to 60,000 pages*1
Drum Cartridge Black	CT351408	Up to 60,000 pages*1
Toner Cartridge Black (Starter)	—	Up to 6,000 pages*2
Toner Cartridge High-capacity Black	CT203998	Up to 24,300 pages*2
Fusing unit 220v	CWAA1064	Up to 200,000 pages
BTR	CWAA1011	Up to 200,000 pages
Paper Roller Kit	CWAA1013	Up to 100,000 pages

- \*1: The number of printable pages is a reference value derived from the average of 3 sheets printed in A4, 1 sided, image coverage per 5% in one setting, under continuous printing usage conditions. The actual number of printable pages may vary to below half the reference value, depending on paper type, paper direction, input/output tray settings, initialization operations upon powering ON/OFF the device, tuning operations to maintain print quality, and other such usage environment conditions.
- \*2: Published value based on ISO/IEC 19752 standards. The actual number of printable pages may vary significantly from the published value, depending on printing content, paper size, paper type, usage conditions, initialization operations upon powering ON/OFF the device, tuning operations to maintain print quality, and other such usage environment conditions.

fujifilm.com/fbau

# FUJIFILM

**FUJIFILM Business Innovation Australia Pty Ltd**

8 Khartoum Road MACQUARIE PARK NSW 2113 Australia  
Tel. +61 2 9856 5000

### Notes:

- To comply with paper weight specifications, it is recommended to use our recommended paper. Document may not be printed correctly depending on usage conditions.
- Functional spare parts will be available for at least 7 years after the product is no longer manufactured.

The available model varies depending on the country/region. Please ask the sales representatives for details.

The product specifications, appearance and other details in this brochure are subject to change without notice for improvements.

**Reproduction Prohibitions** Please note that reproduction of the following is prohibited by law : •Domestic and foreign currencies, government-issued securities, and national bonds and local bond certificates. •Unused postage stamps, post cards, etc. •Certificate stamps stipulated by law. •Reproducing works forming the subject matter of copyright (literary works, musical works, paintings, engravings, maps, cinematographic works, drawings, photographic works, etc.) is not permitted unless the reproduction is for the purpose of personal use, family use or other similar uses within a limited circle.

**Trademarks** •FUJIFILM and FUJIFILM logo are registered trademarks or trademarks of FUJIFILM Corporation. •ApeosPrint and DocuWorks are registered trademarks or trademarks of FUJIFILM Business Innovation Corp. •Adobe, Adobe logo, PostScript and PostScript logo are either registered trademarks or trademarks of Adobe in the United States and/or other countries. •Mopria the Mopria Logo, and the Mopria Alliance word mark and logo are registered and/or unregistered trademarks and service marks of Mopria Alliance, Inc. in the United States and other countries. •Apple, AirPrint and Mac are trademarks of Apple Inc. registered in the U.S. and other countries and regions. •All product names and company names mentioned in this brochure are trademarks or registered trademarks of their respective companies.



### For Your Safety

Before using the product, read the instruction Manual carefully for proper use. Use the product with the power source and voltage specified. Be sure to establish ground connection. Otherwise, electronic shock may result in the case of a failure or short circuit.